

ONE WILSHIRE COLOCATION

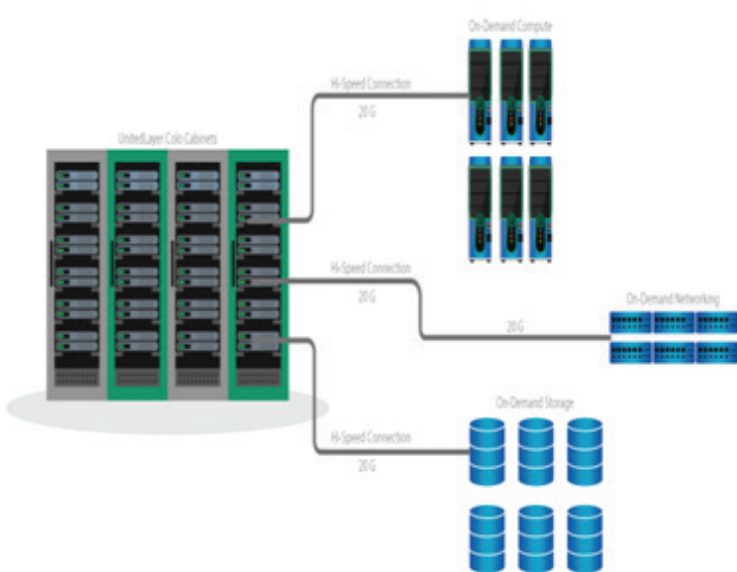
Secure your hardware in one of the most connected data centers in the world

► Why One Wilshire?

One Wilshire Los Angeles, is one of the most densely interconnected data centers in the world, giving businesses the most options to meet their evolving compute needs in the heart of downtown. One Wilshire is a Tier-3 data center with custom cages and extreme connectivity to multiple Tier-1 carriers. The termination of multiple subsea cables at One Wilshire creates industry-leading connectivity from the West Coast to Asia-Pacific so businesses can set up a gateway to the global marketplace.

► Why UnitedLayer?

UnitedLayer is a MultiCloud expert with more than 18 years' experience in data center and cloud transformation services. We have a global footprint of data centers and a pool of experts to provide you with 24x7 uninterrupted service and support.



FULLY COMPLIANT SOLUTION



NEXT GENERATION COLOCATION SOLUTION

► On- Demand Scalability

UnitedLayer's Colocation solution comes with on-demand scalability, where businesses can burst into our highly secure private cloud for additional computing power on-demand to manage any additional business requirements.

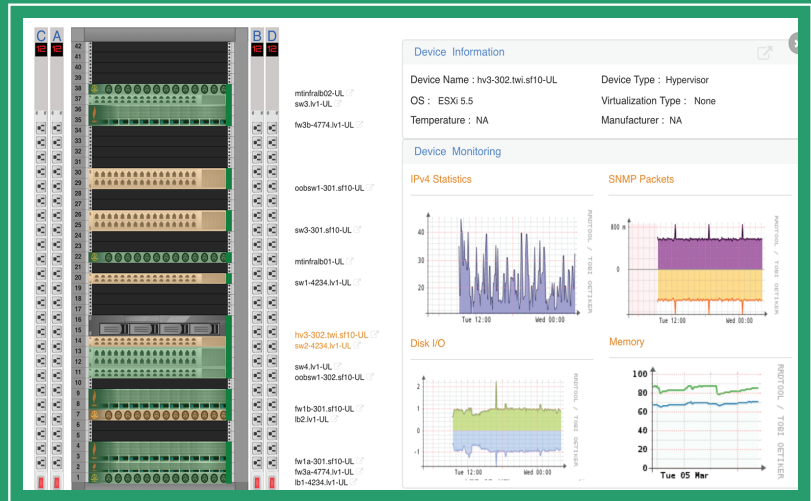
The new computing resources will be up and running in 15 mins rather than the months typically required for traditional infrastructure design, procurement, installation and turn-up.

Our on-demand scalability gives all the benefits of the traditional infrastructure deployed in colocation - dedicated hardware and control of the entire stack, with no large capital outlay or long-term leases-- all in one on-demand and scalable consumption model, previously only offered in the cloud.

► Unified Management

UnitedLayer's unified data center management platform enables your IT team to manage and monitor the colocation infrastructure resources remotely without visiting the facility physically. It provides you with a single pane of glass to visualize, monitor, manage and automate your colocation infrastructure resources in a unified manner.

You can get a visual snapshot of all your devices in the colocation data center, monitor their performance, remotely access and manage those devices and with integrated infrastructure automation tools, your IT team can focus on business growth rather than managing the infrastructure.



FACILITY SPECIFICATIONS



Building

- Over 173,000 square feet space
- Built on bedrock with zone 4 construction
- Seismically rated for protection against earthquakes
- Outside 500-year flood plain
- Multiple cabinets or custom cages with mesh door and individual locks
- Proximity to freeway and offers free parking



Security & Compliance

- 24X7 online security personal and CCTV surveillance
- Card and biometric access
- SSAE-18
- SOC1/2
- HIPPA compliant
- PCI DSS compliant



Network

- Redundant 10 Gb infrastructure
- Carrier neutral facility
- Over 330 carriers on-site
- All major ISPs in building
- Layer 2 connectivity
- Direct connections to leading public clouds (AWS, Azure & GCP)
- IBM Cloud Direct Link
- Oracle Fastconnect



Power

- Redundant diesel generators for power backup
- (N+1)/ 2N UPS architecture
- Monitored PDUs for incab power distribution
- N+1 CRAC units for cooling uptime
- Cabinet temperature sensors

UNITEDLAYER
MANAGED ENTERPRISE MULTICLOUD

www.UnitedLayer.com 1-888-853-7733