

THE 200 PAUL AVENUE COLOCATION

Secure your hardware in the best datacenter in San Francisco

Why 200 Paul?

The 200 Paul data center is one of the largest data centers in San Francisco. Built on bedrock with Zone 4 construction, our data center hosts many engineering, technology and Internet service providers. The 200 Paul is a Tier-3 data center with N+1 architecture for power and cooling, custom cages, and extreme connectivity to multiple Tier-1 carriers. The data center is MultiCloudenabled with direct connections to leading public clouds services like AWS, Azure and GCP through fully redundant 10GB infrastructure.

Why UnitedLayer?

UnitedLayer is a MultiCloud expert with more than 18 years' experience in data center and cloud transformation services. We have a global footprint of data centers and a pool of experts to provide you with 24x7 uninterrupted service and support.

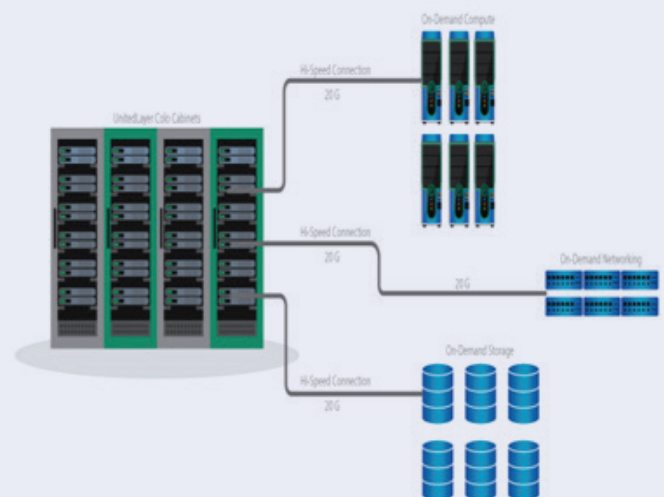
NEXT GENERATION COLOCATION SOLUTION

On- Demand Scalability

UnitedLayer's Colocation solution comes with on-demand scalability, where businesses can burst into our highly secure private cloud for additional computing power on-demand to manage any additional business requirements.

The new computing resources will be up and running in 15 mins rather than the months typically required for traditional infrastructure design, procurement, installation and turn-up.

Our on-demand scalability gives all the benefits of the traditional infrastructure deployed in colocation - dedicated hardware and control of the entire stack, with no large capital outlay or long-term leases-- all in one on-demand and scalable consumption model, previously only offered in the cloud.



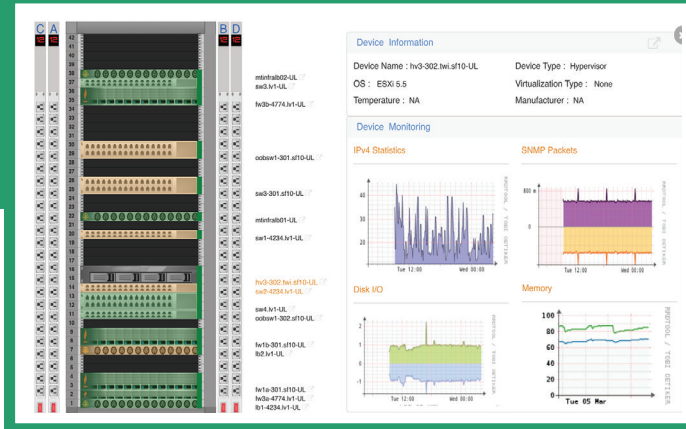
FULLY COMPLIANT SOLUTION



Unified Management

UnitedLayer's unified data center management platform enables your IT team to manage and monitor the colocation infrastructure resources remotely without visiting the facility physically. It provides you with a single pane of glass to visualize, monitor, manage and automate your colocation infrastructure resources in a unified manner.

You can get a visual snapshot of all your devices in the colocation data center, monitor their performance, remotely access and manage those devices and with integrated infrastructure automation tools, your IT team can focus on business growth rather than managing the infrastructure.



FACILITY SPECIFICATIONS

Building

- ◆ Over 482,000 square feet space
- ◆ Built on bedrock with zone 4 construction
- ◆ Seismically rated for protection against earthquakes
- ◆ Outside 500-year flood plain
- ◆ Multiple cabinets or custom cages with mesh doors and individual locks
- ◆ Proximity to freeway and offers free parking

Power

- ◆ 350+Watts per square foot
- ◆ Redundant diesel generators for power backup
- ◆ (N+1)/2N UPS architecture
- ◆ Monitored PDUs for incab power distribution
- ◆ N+1 CRAC units for cooling uptime
- ◆ Cabinet temperature sensors

Network

- ◆ Redundant 10 Gb infrastructure
- ◆ Carrier neutral facility
- ◆ Over 60 carriers on-site
- ◆ Direct access to over 3,000 carriers
- ◆ A11 major ISPs in building
- ◆ Up to 100 Gbps transit/transport options
- ◆ Layer 2 connectivity to all major building in San Francisco

Power

- ◆ 24x7 online security personal and CCTV surveillance
- ◆ Card and biometric access
- ◆ SSAE-18
- ◆ SOC1/2
- ◆ HIPPA compliant
- ◆ FedRAMP/FISHMA certified

UNITEDLAYER
MANAGED ENTERPRISE MULTICLOUD